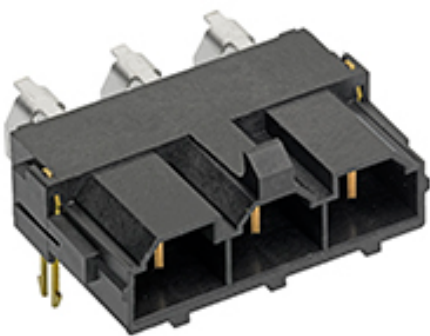




Part Number : [428203222](#)
Product Description : 10.00mm Pitch Mini-Fit
Sr. Header, Single Row, Right-Angle, 2.36mm
PCB Thickness, Tin (Sn) Plating, 3 Circuits, USE
NYE LUBE ON MATING SURFACES
Series Number : 42820
Status : Active
Product Category : PCB Headers and
Receptacles




Documents & Resources

Drawings
[428203222_sd.pdf](#)
[PK-42820-910-001.pdf](#)

Specifications
[AS-42815-001-001.pdf](#)
[PS-42815-001-001.pdf](#)

Product Environment Compliance

Compliance

GADSL/IMDS	Compliant with Exemption 33; 44
China RoHS	
EU ELV	Not Relevant
Low-Halogen Status	Not Low-Halogen per IEC 61249-2-21
REACH SVHC	Not Contained per D(2024)4144-DC (27 June 2024)
EU RoHS	Compliant per EU 2015/863

Multiple Part Product Compliance Statements

- Eu RoHS
- REACH SVHC
- Low-Halogen

Multiple Part Industry Compliance Documents

- IPC 1752A Class C
- IPC 1752A Class D

- Molex Product Compliance Declaration
- IEC-62474
- chemSHERPA (xml)

EU RoHS Certificate of Compliance

Part Details

General

Status	Active
Category	PCB Headers and Receptacles
Series	42820
Description	10.00mm Pitch Mini-Fit Sr. Header, Single Row, Right-Angle, 2.36mm PCB Thickness, Tin (Sn) Plating, 3 Circuits, USE NYE LUBE ON MATING SURFACES
Application	Power, Wire-to-Board
Comments	WHEN USING OVERALL TIN PLATED TERMINALS: FOR APPLICATIONS INVOLVING VIBRATION AND/OR THERMAL CYCLING, MOLEX STRONGLY RECOMMENDS THE USE OF NYE LUBRICANT (NYOGEL 7600) ON THE MATING SURFACES OF THE TERMINAL
Component Type	PCB Header
Product Name	Mini-Fit Sr.
UPC	800754383011

Agency

UL	E29179
----	--------

Electrical

Current - Maximum per Contact	50.0A
Voltage - Maximum	600V

Physical

Breakaway	No
Circuits (Loaded)	3
Circuits (maximum)	3
Color - Resin	Black

Durability (mating cycles max)	30
First Mate / Last Break	No
Flammability	94V-0
Glow-Wire Capable	No
Guide to Mating Part	No
Keying to Mating Part	None
Lock to Mating Part	Yes
Material - Metal	Brass
Material - Plating Mating	Tin
Material - Plating Termination	Tin
Material - Resin	High Temperature Thermoplastic
Net Weight	9.779/g
Number of Rows	1
Orientation	Right Angle
Packaging Type	Tube
PC Tail Length	5.10mm
PCB Locator	Yes
PCB Retention	Yes
PCB Thickness - Recommended	2.36mm
Pitch - Mating Interface	10.00mm
Pitch - Termination Interface	10.00mm
Plating min - Mating	2.540µm
Plating min - Termination	2.540µm
Polarized to Mating Part	Yes
Polarized to PCB	Yes
Shrouded	Fully
Stackable	No
Temperature Range - Operating	-40° to +105°C
Termination Interface Style	Through Hole

Solder Process Data

Max-Duration	30
Lead-Free Process Capability	SMC&WAVE
Max-Cycle	3
Max-Temp	235

Mates With / Use With

Mates with Part(s)

Description	Part Number
10.00mm Pitch Mini-Fit Sr. Single Row Receptacle Housings	<u>42816</u>