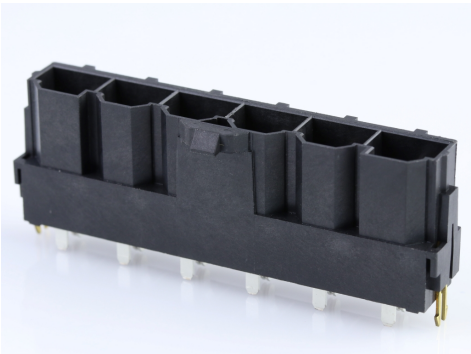




Part Number : [428196213](#)
Product Description : 10.00mm Pitch Mini-Fit
Sr. Header, Single Row, Vertical, 1.57mm PCB
Thickness, 0.76µm Gold (Au) Selective Plating,
6 Circuits
Series Number : 42819
Status : Active
Product Category : PCB Headers and
Receptacles



Documents & Resources


Drawings
[428196213_sd.pdf](#)
[PK-42819-2375-001.pdf](#)

3D Models and Design Files
[428196213_stp.zip](#)

Specifications
[PS-42815-001-001.pdf](#)

Product Environment Compliance

Compliance

| | |
|--------------------|---|
| GADSL/IMDS | Compliant with Exemption 44 |
| China RoHS |  |
| EU ELV | Not Relevant |
| Low-Halogen Status | Not Low-Halogen per IEC 61249-2-21 |
| REACH SVHC | Not Contained per D(2024)4144-DC (27 June 2024) |
| EU RoHS | Compliant per EU 2015/863 |

Multiple Part Product Compliance Statements
- Eu RoHS
- REACH SVHC
- Low-Halogen

Multiple Part Industry Compliance Documents

- IPC 1752A Class C
- IPC 1752A Class D
- Molex Product Compliance Declaration
- IEC-62474
- chemSHERPA (xml)

EU RoHS Certificate of Compliance

Part Details

General

| | |
|----------------|---|
| Status | Active |
| Category | PCB Headers and Receptacles |
| Series | 42819 |
| Description | 10.00mm Pitch Mini-Fit Sr. Header, Single Row, Vertical, 1.57mm PCB Thickness, 0.76µm Gold (Au) Selective Plating, 6 Circuits |
| Application | Power, Wire-to-Board |
| Component Type | PCB Header |
| Product Name | Mini-Fit Sr. |
| UPC | 800756513799 |

Agency

| | |
|-----|---------|
| CSA | LR19980 |
| UL | E29179 |

Electrical

| | |
|-------------------------------|-------|
| Current - Maximum per Contact | 50.0A |
| Voltage - Maximum | 600V |

Physical

| | |
|--------------------------------|-------|
| Breakaway | No |
| Circuits (Loaded) | 6 |
| Circuits (maximum) | 6 |
| Color - Resin | Black |
| Durability (mating cycles max) | 100 |
| First Mate / Last Break | No |

| | |
|--------------------------------|--------------------------------|
| Flammability | 94V-0 |
| Glow-Wire Capable | No |
| Guide to Mating Part | No |
| Keying to Mating Part | None |
| Lock to Mating Part | Yes |
| Material - Metal | Brass |
| Material - Plating Mating | Gold |
| Material - Plating Termination | Tin |
| Material - Resin | High Temperature Thermoplastic |
| Net Weight | 13.776/g |
| Number of Rows | 1 |
| Orientation | Vertical |
| Packaging Type | Tray |
| PC Tail Length | 3.50mm |
| PCB Locator | Yes |
| PCB Retention | Yes |
| PCB Thickness - Recommended | 1.57mm |
| Pitch - Mating Interface | 10.00mm |
| Pitch - Termination Interface | 10.00mm |
| Plating min - Mating | 0.762µm |
| Plating min - Termination | 2.540µm |
| Polarized to Mating Part | Yes |
| Polarized to PCB | Yes |
| Shrouded | Fully |
| Stackable | No |
| Temperature Range - Operating | -40° to +105°C |
| Termination Interface Style | Through Hole |

Solder Process Data

| | |
|------------------------------|----------|
| Max-Duration | 30 |
| Lead-Free Process Capability | SMC&WAVE |
| Max-Cycle | 3 |
| Max-Temp | 235 |

Mates With / Use With

Mates with Part(s)

| Description | Part Number |
|--|--------------|
| 10.00mm Pitch Mini-Fit Sr. Single Row Receptacle Housings | <u>42816</u> |

This document was generated on Oct 16, 2024