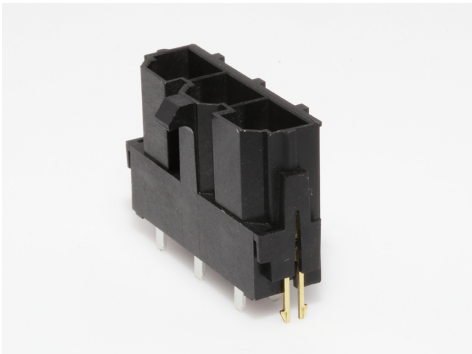




**Part Number :** [428193242](#)  
**Product Description :** 10.00mm Pitch Mini-Fit  
Sr. Header, Single Row, Vertical, 6.35mm PCB  
Thickness, Tin (Sn) Plating, 3 Circuits, USE NYE  
LUBE ON MATING SURFACES  
**Series Number :** 42819  
**Status :** Active  
**Product Category :** PCB Headers and  
Receptacles



## Documents & Resources

**Drawings**  
[428193242\\_sd.pdf](#)  
[PK-42819-2375-001.pdf](#)

**Specifications**  
[AS-42815-001-001.pdf](#)  
[PS-42815-001-001.pdf](#)

## Product Environment Compliance

### Compliance

GADSL/IMDS	Not Relevant
China RoHS	
EU ELV	Not Relevant
Low-Halogen Status	Not Low-Halogen per IEC 61249-2-21
REACH SVHC	Not Contained per D(2024)4144-DC (27 June 2024)
EU RoHS	Compliant per EU 2015/863

### Multiple Part Product Compliance Statements

- Eu RoHS
- REACH SVHC
- Low-Halogen

### Multiple Part Industry Compliance Documents

- IPC 1752A Class C
- IPC 1752A Class D

- Molex Product Compliance Declaration
- IEC-62474
- chemSHERPA (xml)

## EU RoHS Certificate of Compliance

---

### Part Details

#### General

Status	Active
Category	PCB Headers and Receptacles
Series	42819
Description	10.00mm Pitch Mini-Fit Sr. Header, Single Row, Vertical, 6.35mm PCB Thickness, Tin (Sn) Plating, 3 Circuits, USE NYE LUBE ON MATING SURFACES
Application	Power, Wire-to-Board
Comments	WHEN USING OVERALL TIN PLATED TERMINALS: FOR APPLICATIONS INVOLVING VIBRATION AND/OR THERMAL CYCLING, MOLEX STRONGLY RECOMMENDS THE USE OF NYE LUBRICANT (NYOGEL 7600) ON THE MATING SURFACES OF THE TERMINAL
Component Type	PCB Header
Product Name	Mini-Fit Sr.
UPC	800754879927

#### Agency

CSA	LR19980
UL	E29179

#### Electrical

Current - Maximum per Contact	50.0A
Voltage - Maximum	600V

#### Physical

Breakaway	No
Circuits (Loaded)	3
Circuits (maximum)	3

Color - Resin	Black
Durability (mating cycles max)	30
First Mate / Last Break	No
Flammability	94V-0
Glow-Wire Capable	No
Guide to Mating Part	No
Keying to Mating Part	None
Lock to Mating Part	Yes
Material - Metal	Brass
Material - Plating Mating	Tin
Material - Plating Termination	Tin
Material - Resin	High Temperature Thermoplastic
Net Weight	7.952/g
Number of Rows	1
Orientation	Vertical
Packaging Type	Tray
PC Tail Length	8.30mm
PCB Locator	Yes
PCB Retention	Yes
PCB Thickness - Recommended	6.35mm
Pitch - Mating Interface	10.00mm
Pitch - Termination Interface	10.00mm
Plating min - Mating	2.540µm
Plating min - Termination	2.540µm
Polarized to Mating Part	Yes
Polarized to PCB	Yes
Shrouded	Fully
Stackable	No
Temperature Range - Operating	-40° to +105°C
Termination Interface Style	Through Hole

### Solder Process Data

Max-Duration	30
Lead-Free Process Capability	SMC&WAVE
Max-Cycle	3

Max-Temp	235
----------	-----

---

Mates With / Use With

Mates with Part(s)

Description	Part Number
10.00mm Pitch Mini-Fit Sr. Single Row Receptacle Housings	<u>42816</u>