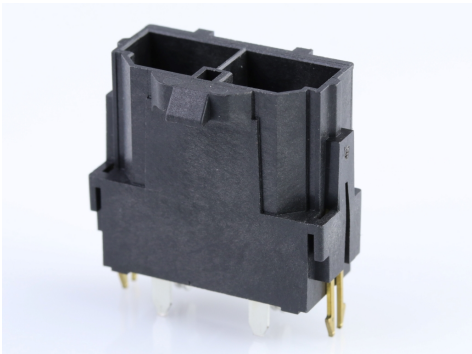




Part Number : [428192213](#)
Product Description : 10.00mm Pitch Mini-Fit
Sr. Header, Single Row, Vertical, 1.57mm PCB
Thickness, 0.76µm Gold (Au) Selective Plating,
2 Circuits
Series Number : 42819
Status : Active
Product Category : PCB Headers and
Receptacles



Documents & Resources


Drawings
[428192213_sd.pdf](#)
[PK-42819-2375-001.pdf](#)

3D Models and Design Files
[428192213_stp.zip](#)

Specifications
[PS-42815-001-001.pdf](#)

Product Environment Compliance

Compliance

GADSL/IMDS	Compliant with Exemption 44
China RoHS	
EU ELV	Not Relevant
Low-Halogen Status	Not Low-Halogen per IEC 61249-2-21
REACH SVHC	Not Contained per D(2024)4144-DC (27 June 2024)
EU RoHS	Compliant per EU 2015/863

Multiple Part Product Compliance Statements
- Eu RoHS
- REACH SVHC
- Low-Halogen

Multiple Part Industry Compliance Documents

- IPC 1752A Class C
- IPC 1752A Class D
- Molex Product Compliance Declaration
- IEC-62474
- chemSHERPA (xml)

EU RoHS Certificate of Compliance

Part Details

General

Status	Active
Category	PCB Headers and Receptacles
Series	42819
Description	10.00mm Pitch Mini-Fit Sr. Header, Single Row, Vertical, 1.57mm PCB Thickness, 0.76µm Gold (Au) Selective Plating, 2 Circuits
Application	Power, Wire-to-Board
Component Type	PCB Header
Product Name	Mini-Fit Sr.
UPC	800756508481

Agency

CSA	LR19980
UL	E29179

Electrical

Current - Maximum per Contact	50.0A
Voltage - Maximum	600V

Physical

Breakaway	No
Circuits (Loaded)	2
Circuits (maximum)	2
Color - Resin	Black
Durability (mating cycles max)	100
First Mate / Last Break	No

Flammability	94V-0
Glow-Wire Capable	No
Guide to Mating Part	No
Keying to Mating Part	None
Lock to Mating Part	Yes
Material - Metal	Brass
Material - Plating Mating	Gold
Material - Plating Termination	Tin
Material - Resin	High Temperature Thermoplastic
Net Weight	5.385/g
Number of Rows	1
Orientation	Vertical
Packaging Type	Tray
PC Tail Length	3.50mm
PCB Locator	Yes
PCB Retention	Yes
PCB Thickness - Recommended	1.57mm
Pitch - Mating Interface	10.00mm
Pitch - Termination Interface	10.00mm
Plating min - Mating	0.762µm
Plating min - Termination	2.540µm
Polarized to Mating Part	Yes
Polarized to PCB	Yes
Shrouded	Fully
Stackable	No
Temperature Range - Operating	-40° to +105°C
Termination Interface Style	Through Hole

Solder Process Data

Max-Duration	30
Lead-Free Process Capability	SMC&WAVE
Max-Cycle	3
Max-Temp	235

Mates With / Use With

Mates with Part(s)

Description	Part Number
Mini-Fit Sr.-to-Mini-Fit Sr. Off-the-Shelf (OTS) Cable Assembly, 10.00mm Pitch, Single Row, 0.15m Length, 2 Circuits, Black	<u>369240201</u>
Mini-Fit Sr.-to-Mini-Fit Sr. Off-the-Shelf (OTS) Cable Assembly, 10.00mm Pitch, Single Row, 0.30m Length, 2 Circuits, Black	<u>369240203</u>
Mini-Fit Sr.-to-Mini-Fit Sr. Off-the-Shelf (OTS) Cable Assembly, 10.00mm Pitch, Single Row, 1.0m Length, 2 Circuits, Black	<u>369240210</u>
10.00mm Pitch Mini-Fit Sr. Single Row Receptacle Housings	<u>42816</u>