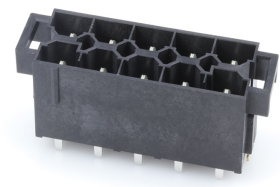




**Part Number :** [439151403](#)  
**Product Description :** 10.00mm Pitch Mini-Fit  
Sr. Header, Dual Row, Vertical, 1.57mm PCB  
Thickness, Silver (Ag) Plating, 10 Circuits  
**Series Number :** 43915  
**Status :** Active  
**Product Category :** PCB Headers and  
Receptacles



## Documents & Resources


**Drawings**  
[439151403\\_sd.pdf](#)

**3D Models and Design Files**  
[439151403\\_stp.zip](#)

**Specifications**  
[PS-42815-001-001.pdf](#)  
[TS-42815-004-001.pdf](#)

## Product Environment Compliance

### Compliance

GADSL/IMDS	Compliant with Exemption 44; 33
China RoHS	
EU ELV	Not Relevant
Low-Halogen Status	Not Low-Halogen per IEC 61249-2-21
REACH SVHC	Not Contained per D(2024)4144-DC (27 June 2024)
EU RoHS	Compliant per EU 2015/863

Multiple Part Product Compliance Statements  
- Eu RoHS  
- REACH SVHC  
- Low-Halogen

Multiple Part Industry Compliance Documents  
- IPC 1752A Class C

- IPC 1752A Class D
- Molex Product Compliance Declaration
- IEC-62474
- chemSHERPA (xml)

## EU RoHS Certificate of Compliance

---

### Part Details

#### General

Status	Active
Category	PCB Headers and Receptacles
Series	43915
Description	10.00mm Pitch Mini-Fit Sr. Header, Dual Row, Vertical, 1.57mm PCB Thickness, Silver (Ag) Plating, 10 Circuits
Application	Power, Wire-to-Board
Component Type	PCB Header
Product Name	Mini-Fit Sr.
UPC	889056247405

#### Agency

CSA	LR19980
UL	E29179

#### Electrical

Current - Maximum per Contact	50.0A
Voltage - Maximum	600V

#### Physical

Breakaway	No
Circuits (Loaded)	10
Circuits (maximum)	10
Color - Resin	Black
Durability (mating cycles max)	30
First Mate / Last Break	No
Flammability	94V-0

Glow-Wire Capable	No
Guide to Mating Part	No
Keying to Mating Part	None
Lock to Mating Part	Yes
Material - Metal	Brass
Material - Plating Mating	Silver
Material - Plating Termination	Tin
Material - Resin	High Temperature Thermoplastic
Net Weight	22.172/g
Number of Rows	2
Orientation	Vertical
Packaging Type	Tray
PC Tail Length	3.50mm
PCB Locator	Yes
PCB Retention	Yes
PCB Thickness - Recommended	1.57mm
Pitch - Mating Interface	10.00mm
Pitch - Termination Interface	10.00mm
Plating min - Mating	2.540µm
Plating min - Termination	2.540µm
Polarized to Mating Part	Yes
Polarized to PCB	Yes
Shrouded	Fully
Stackable	No
Temperature Range - Operating	-40° to +105°C
Termination Interface Style	Through Hole

#### Solder Process Data

Max-Duration	30
Lead-Free Process Capability	SMC&WAVE
Max-Cycle	3
Max-Temp	235

---

#### Mates With / Use With

Mates with Part(s)

Description	Part Number
Mini-Fit Sr. Dual Row Receptacle Housings	<u>43914</u>

---

---

This document was generated on Oct 16, 2024