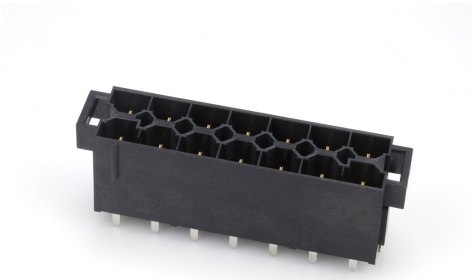




Part Number : [439151205](#)
Product Description : 10.00mm Pitch Mini-Fit
Sr. Header, Dual Row, Vertical, 1.57mm PCB
Thickness, 0.76µm Gold (Au) Selective Plating,
14 Circuits
Series Number : 43915
Status : Active
Product Category : PCB Headers and
Receptacles




Documents & Resources

Drawings
[439151205_sd.pdf](#)

3D Models and Design Files
[439151205_stp.zip](#)

Product Environment Compliance

Compliance

GADSL/IMDS	Compliant with Exemption 44
China RoHS	
EU ELV	Not Relevant
Low-Halogen Status	Not Low-Halogen per IEC 61249-2-21
REACH SVHC	Not Contained per D(2024)4144-DC (27 June 2024)
EU RoHS	Compliant per EU 2015/863

Multiple Part Product Compliance Statements

- Eu RoHS
- REACH SVHC
- Low-Halogen

Multiple Part Industry Compliance Documents

- IPC 1752A Class C
- IPC 1752A Class D
- Molex Product Compliance Declaration
- IEC-62474

Part Details

General

Status	Active
Category	PCB Headers and Receptacles
Series	43915
Description	10.00mm Pitch Mini-Fit Sr. Header, Dual Row, Vertical, 1.57mm PCB Thickness, 0.76µm Gold (Au) Selective Plating, 14 Circuits
Application	Power, Wire-to-Board
Component Type	PCB Header
Product Name	Mini-Fit Sr.
UPC	800756522333

Agency

UL	E29179
----	--------

Electrical

Current - Maximum per Contact	50.0A
Voltage - Maximum	600V

Physical

Breakaway	No
Circuits (Loaded)	14
Circuits (maximum)	14
Color - Resin	Black
Durability (mating cycles max)	100
First Mate / Last Break	No
Flammability	94V-0
Glow-Wire Capable	No
Guide to Mating Part	No
Keying to Mating Part	None
Lock to Mating Part	Yes

Material - Metal	Brass
Material - Plating Mating	Gold
Material - Plating Termination	Tin
Material - Resin	High Temperature Thermoplastic
Net Weight	30.517/g
Number of Rows	2
Orientation	Vertical
Packaging Type	Tray
PC Tail Length	3.50mm
PCB Locator	Yes
PCB Retention	Yes
PCB Thickness - Recommended	1.57mm
Pitch - Mating Interface	10.00mm
Pitch - Termination Interface	10.00mm
Plating min - Mating	0.762µm
Plating min - Termination	2.540µm
Polarized to Mating Part	Yes
Polarized to PCB	Yes
Shrouded	Fully
Stackable	No
Temperature Range - Operating	-40° to +105°C
Termination Interface Style	Through Hole

Solder Process Data

Max-Duration	30
Lead-Free Process Capability	SMC&WAVE
Max-Cycle	3
Max-Temp	235

Mates With / Use With

Mates with Part(s)

Description	Part Number
Mini-Fit Sr. Dual Row Receptacle Housings	<u>43914</u>

This document was generated on Oct 16, 2024