



Part Number : [436400300](#)

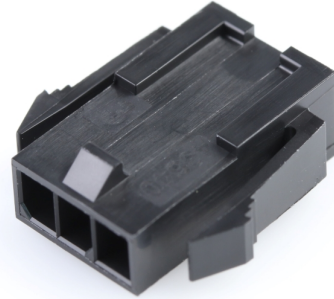
Product Description : Nano-Fit Vertical Header, Through Hole, 2.50mm Pitch, Single Row, 6 Circuits, with Kinked Pins, 0.76µm Gold (Au) Plating, Lubricated, Natural, Glow-Wire Capable, Tape and Reel

Series Number : 105309

Status : Active

Product Category : PCB Headers and Receptacles

Packaging Alternative : 1053092406 (Tray)



Documents & Resources

Drawings

[1053094806_sd.pdf](#)

[1053091000-PK-000.pdf](#)

3D Models and Design Files

[1053094806_stp.zip](#)

Specifications

[1053001000-PS-CH-000.pdf](#)

[1053001000-PS-ES-000.pdf](#)

[1053001000-PS-JP-000.pdf](#)

[1053001000-PS-SK-000.pdf](#)

[PS-105300-100-001.pdf](#)

Product Environment Compliance

Compliance

China RoHS	Not Reviewed
EU ELV	Not Reviewed
Low-Halogen Status	Not Reviewed
REACH SVHC	Not Reviewed
EU RoHS	Not Reviewed

[Multiple Part Product Compliance Statements](#)

- Eu RoHS

- REACH SVHC

- Low-Halogen

Multiple Part Industry Compliance Documents

- IPC 1752A Class C

- IPC 1752A Class D

- Molex Product Compliance Declaration

- IEC-62474

- chemSHERPA (xml)

EU RoHS Certificate of Compliance

Part Details

General

Status	Active
Category	PCB Headers and Receptacles
Series	105309
Description	Nano-Fit Vertical Header, Through Hole, 2.50mm Pitch, Single Row, 6 Circuits, with Kinked Pins, 0.76µm Gold (Au) Plating, Lubricated, Natural, Glow-Wire Capable, Tape and Reel
Application	Power, Wire-to-Board
Component Type	PCB Header
Product Name	Nano-Fit
UPC	193264645930

Electrical

Current - Maximum per Contact	8.0A
Voltage - Maximum	250V AC (RMS)/DC

Physical

Breakaway	No
Circuits (Loaded)	6
Circuits (maximum)	6
Color - Resin	Natural
Durability (mating cycles max)	50
Glow-Wire Capable	Yes

Guide to Mating Part	No
Keying to Mating Part	Yes
Lock to Mating Part	Yes
Material - Metal	Brass
Material - Plating Mating	Gold
Material - Plating Termination	Tin
Material - Resin	Liquid Crystal Polymer
Net Weight	0.668/g
Number of Rows	1
Orientation	Vertical
Packaging Type	Embossed Tape on Reel
PC Tail Length	3.20mm
PCB Locator	Yes
PCB Retention	Yes
PCB Thickness - Recommended	1.60mm, 2.40mm
Pitch - Mating Interface	2.50mm
Pitch - Termination Interface	2.50mm
Plating min - Mating	0.762µm
Plating min - Termination	1.524µm
Polarized to Mating Part	Yes
Polarized to PCB	Yes
Shrouded	Yes
Stackable	No
Temperature Range - Operating	-40° to +115°C
Termination Interface Style	Through Hole

Mates With / Use With

Mates with Part(s)

Description	Part Number
Nano-Fit Receptacle Housing, TPA Capable, 2.50mm Pitch, Single Row, 6 Circuits, Natural, Glow-Wire Capable	<u>1053072206</u>

This document was generated on Oct 15, 2024