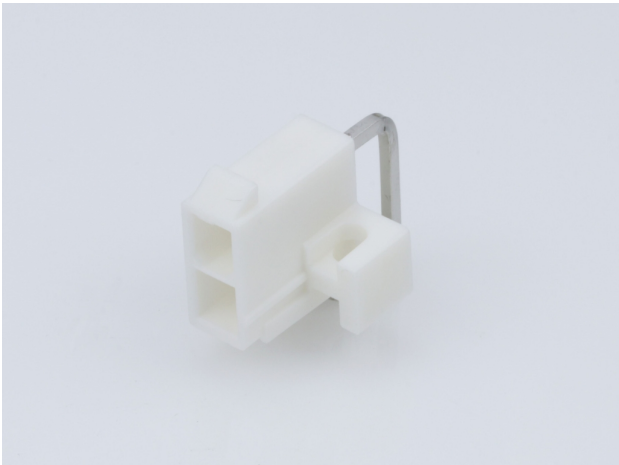




**Part Number :** [39291027](#)  
**Product Description :** Mini-Fit Jr. Header, Dual Row, Right-Angle, with PCB Mounting Flange, 2 Circuits, PA Polyamide Nylon 6/6 94V-0, Tin (Sn) Plating  
**Series Number :** 5569  
**Status :** Active  
**Product Category :** PCB Headers and Receptacles  
**Engineering Number :** 5569-02A1-210



Documents & Resources

Drawings

[039291027\\_sd.pdf](#)  
[55690001-PK-000.pdf](#)

3D Models and Design Files


[039291027\\_stp.zip](#)

Specifications

[AS-5557-001-001.pdf](#)  
[PK-5569-002-001.pdf](#)  
[PS-45750-001-001.pdf](#)  
[PS-5556-001-001.pdf](#)

Product Environment Compliance

Compliance

|                    |   |
|--------------------|---|
| GADSL/IMDS         | Compliant with Exemption 44; 47; 33   |
| China RoHS         |  |
| EU ELV             | Not Relevant  |
| Low-Halogen Status | Low-Halogen per IEC 61249-2-21  |
| REACH SVHC         | Not Contained per D(2024)4144-DC (27 June 2024)                                       |
| EU RoHS            | Compliant per EU 2015/863   |

[Multiple Part Product Compliance Statements](#)

- Eu RoHS
- REACH SVHC
- Low-Halogen

#### Multiple Part Industry Compliance Documents

- IPC 1752A Class C
- IPC 1752A Class D
- Molex Product Compliance Declaration
- IEC-62474
- chemSHERPA (xml)

#### EU RoHS Certificate of Compliance

---

## Part Details

### General

|                |  |
|----------------|--|
| Status         | Active   |
| Category       | PCB Headers and Receptacles  |
| Series         | 5569   |
| Description    | Mini-Fit Jr. Header, Dual Row, Right-Angle, with PCB Mounting Flange, 2 Circuits, PA Polyamide Nylon 6/6 94V-0, Tin (Sn) Plating   |
| Application    | Power, Wire-to-Board   |
| Comments       | Current = 13A max. per circuit when header is mated to a receptacle loaded with 45750 Mini-Fit Plus HCS Crimp Terminal Crimped to 16 AWG wire. See Molex Product specification PS-5556-001 for additional current de-rating information. |
| Component Type | PCB Header   |
| Product Name   | Mini-Fit Jr.   |
| UPC            | 800753628809   |

### Agency

|     |         |
|-----|---------|
| CSA | LR19980 |
| UL  | E29179  |

### Electrical

|                               |       |
|-------------------------------|-------|
| Current - Maximum per Contact | 13.0A |
| Voltage - Maximum             | 600V  |

## Physical

|                                |                |
|--------------------------------|----------------|
| Breakaway                      | No             |
| Circuits (Loaded)              | 2              |
| Circuits (maximum)             | 2              |
| Color - Resin                  | Natural        |
| Durability (mating cycles max) | 30             |
| First Mate / Last Break        | No             |
| Flammability                   | 94V-0          |
| Glow-Wire Capable              | No             |
| Guide to Mating Part           | No             |
| Keying to Mating Part          | None           |
| Lock to Mating Part            | Yes            |
| Material - Metal               | Brass          |
| Material - Plating Mating      | Matte Tin      |
| Material - Plating Termination | Matte Tin      |
| Material - Resin               | Nylon          |
| Net Weight                     | 1.105/g        |
| Number of Rows                 | 2              |
| Orientation                    | Right Angle    |
| Packaging Type                 | Bag            |
| PCB Locator                    | Yes            |
| PCB Retention                  | Yes            |
| PCB Thickness - Recommended    | 1.78mm         |
| Pitch - Mating Interface       | 4.20mm         |
| Pitch - Termination Interface  | 4.20mm         |
| Plating min - Mating           | 2.540µm        |
| Plating min - Termination      | 2.540µm        |
| Polarized to Mating Part       | Yes            |
| Polarized to PCB               | Yes            |
| Shrouded                       | Fully          |
| Stackable                      | No             |
| Temperature Range - Operating  | -40° to +105°C |
| Termination Interface Style    | Through Hole   |

## Solder Process Data

|                              |      |
|------------------------------|------|
| Max-Duration                 | 5    |
| Lead-Free Process Capability | WAVE |
| Max-Cycle                    | 1    |
| Max-Temp                     | 260  |

---

## Mates With / Use With

### Mates with Part(s)

| Description  | Part Number   |
|--|---------------|
| Mini-Fit Jr. Receptacle Housings   | <u>5557</u>   |
| Mini-Fit TPA2-to-Mini-Fit TPA2 Off-the-Shelf (OTS) Cable Assemblies          | <u>45135</u>  |
| Mini-Fit TPA2 and Mini-Fit Sigma Dual Row Receptacle Housings                | <u>172708</u> |
| Mini-Fit Jr.-to-Mini-Fit Jr. Off-the-Shelf (OTS) Overmolded Cable Assemblies | <u>245135</u> |